

MARADYNE MODEL 5000 - 12v/24v

INSTALLATION & OPERATION

INSTALLATION:



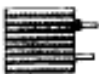



- Make sure that heater voltage matches system voltage.
- Select a location for the heater.
- Using the enclosed drilling template, locate and drill 5/16 holes for the mounting studs. Locate and drill two 1" holes for the core tubes.
- Mount heater using (3) 1/4-20 nuts.
- For new installations connect water hoses directly to inlet/outlet heater tubes.
- For auxiliary use, connect in series with the existing heater.
- Wire the heater, as shown in wiring diagram, to a fused vehicle circuit.
- A separate ground wire must be provided if heater is mounted to a non-metallic surface.

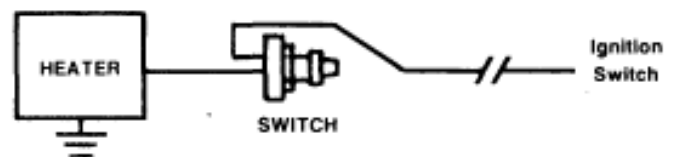
OPERATION:

Rotate the fan speed switch to regulate heated air circulation.

AVAILABLE FROM:

PARTS

	KEY	PART NO.	DESCRIPTION
	1	61312	Cover
	2	61311	Body
	3	61315	Coil
	4	61319	Fan Blade
	5	53005 - 1 53006 - 1	Motor 12v Motor 24v
	6	61325	Switch



When ordering parts please specify:

Model
Voltage
Part No.
Description



MARADYNE

MOBILE PRODUCTS
6501 Barberton Avenue
Cleveland, Ohio 44102

A DREISON INTERNATIONAL COMPANY

Phone (216) 281-7810

Fax (216) 281-1132

INSTALLATION INSTRUCTIONS

LOCATION

Determine the best position for the heater in the passenger compartment, then check the back side of the mounting surface for interference. After determining a suitable location, use the template provided to drill the required holes. Fasten the heater with nuts provided.

ELECTRICAL CONNECTIONS

The switch may be located at any convenient position on the lower edge of the instrument panel. CAUTION: Heater control switch operates at elevated temperatures! Do not locate switch near combustible items. Allow a minimum of three inches (3") around switch for proper cooling. Switch should not be installed in a plastic panel! Consult factory for recommendations. The heater is grounded through the mounting studs. Connect the motor lead to the switch terminal marked M (or MOT.). Connect the switch terminal marked B (or BAT.) to a fused and keyed side of the ignition switch so the heater can not be operated when the ignition is turned off.

WATER CONNECTIONS

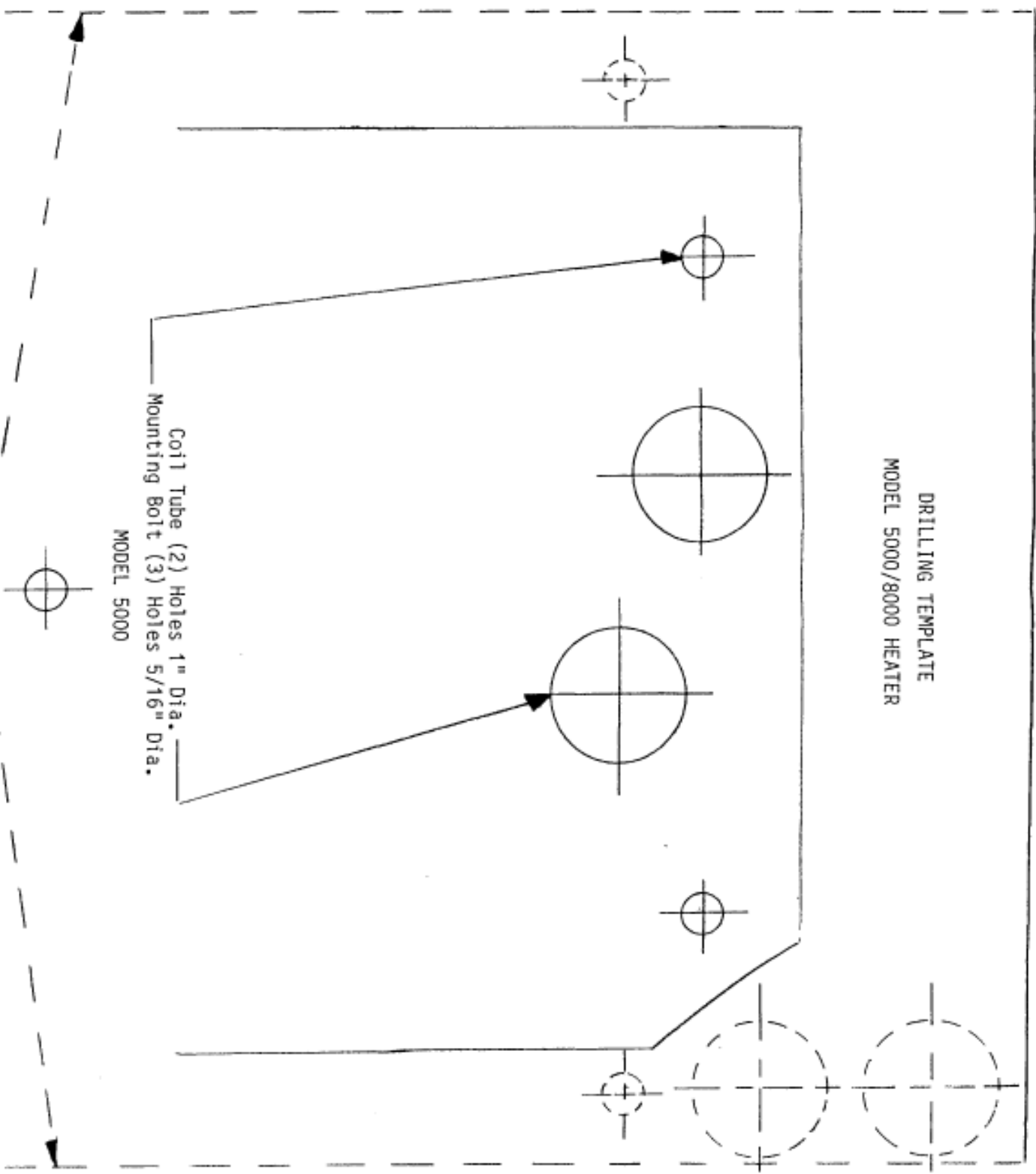
Drain the radiator. The upper heater tube should be connected to the water pump and the lower heater tube should be connected to the engine water outlet connector provided for this purpose. Use pipe sealing compound on all pipe threads. Be sure the connections are tight and that the hose clamps are properly installed.

OPERATION

After refilling the radiator, warm up the engine to make sure the installation is satisfactory. Operate the engine at a speed above idle while it is warming up to help the heater expel itself of entrapped air.

The doors on the heater may be adjusted to give the desired amount of heat to the vehicle.

DRILLING TEMPLATE
MODEL 5000/8000 HEATER



Coil Tube (2) Holes 1" Dia.
Mounting Bolt (3) Holes 5/16" Dia.

MODEL 5000

MODEL 8000

Coil Tube (2) Holes 1" Dia.
Mounting Bolt (2) Holes 5/16" Dia.