



DESCRIPTION

Albright International announces a new addition to its DC Contactor range, the SU280.

This freestanding compact contactor follows the established and innovative designs of Albright products. The following features are available on this new range of contactors:

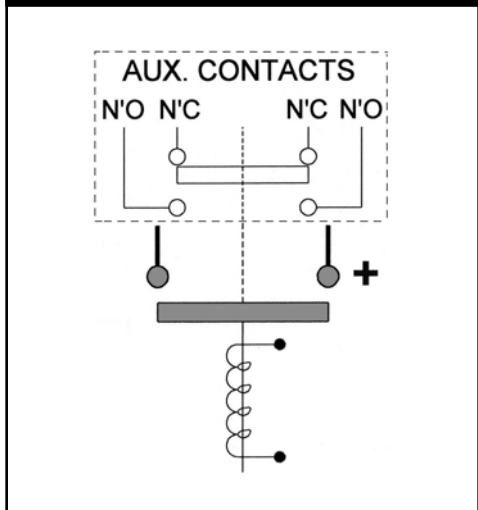
- Magnetic Blowouts "B" Option
- Auxiliary Contacts "A" Option
- Magnetically Latched "M" Option
- Coil Suppression
- Optional Mounting Brackets available

- Open style Top Cover supplied as standard.
- Enclosed Top Cover Option can be fitted upon request.

These contactor variants are an innovative and unique introduction from the World's leading manufacturer of DC Contactors.

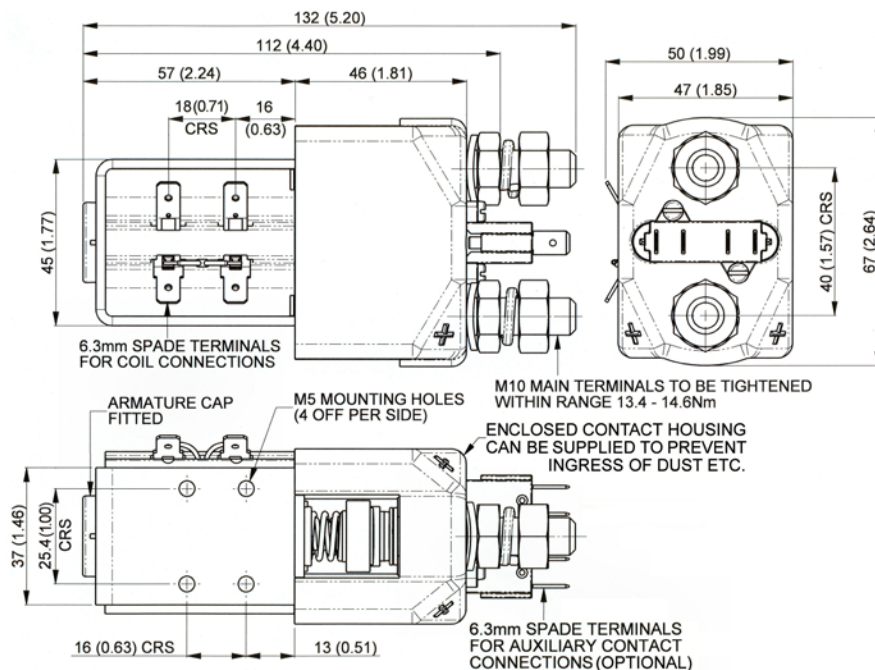
Note: The fitment of the Enclosed Top Cover option is not recommended when the Magnetic Blowout "B" option is fitted. For further information on this, please contact Albright or your nearest distributor.

CONNECTION DIAGRAMS

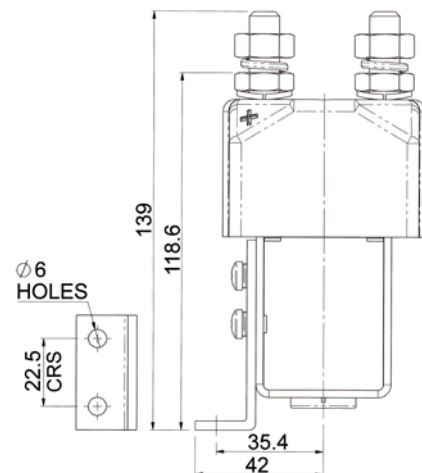
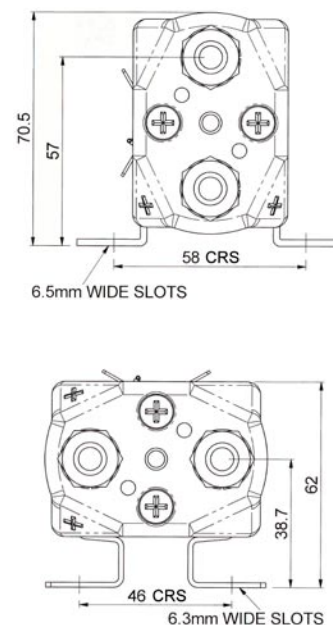


SU280 DIMENSION DRAWING

Dimensions in mm

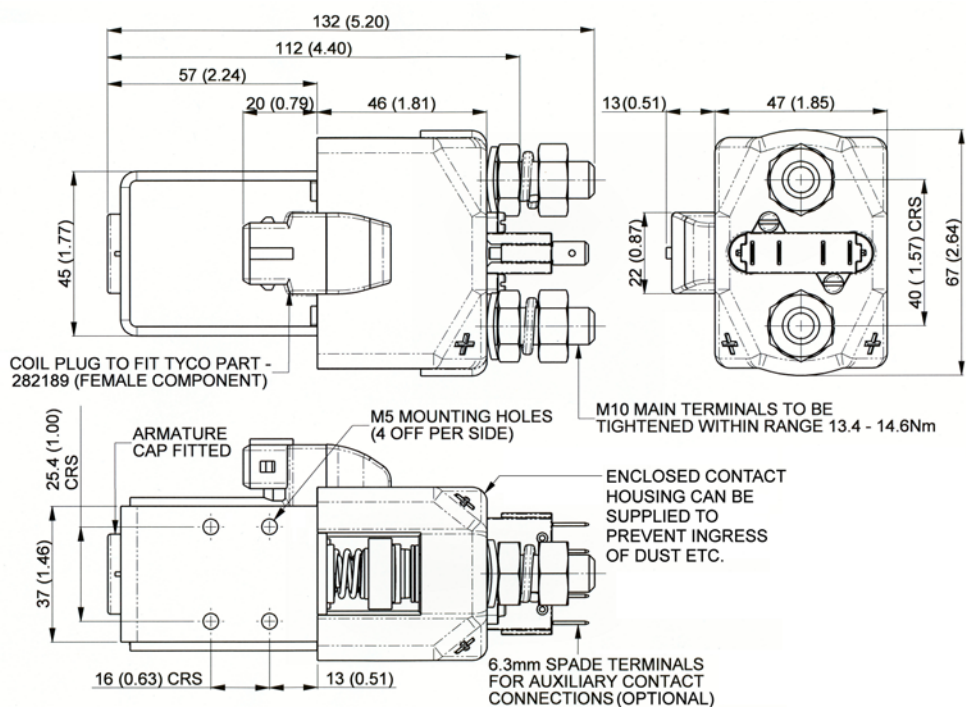


DRILLING DETAILS FOR MOUNTING



SU280B DIMENSION DRAWING

Dimensions in mm



PERFORMANCE DATA

Thermal Current Rating (100%):

Up to 350 Ampere

This is subject to suitable conductors being used. For switching applications, please contact the Albright Technical Department.

Reduced Duty Cycle Ratings:

30% - 635 Ampere 60% - 450 Ampere
 40% - 550 Ampere 70% - 415 Ampere
 50% - 495 Ampere

Typical Inductive Fault Currents that can be ruptured (5ms time constant):

SU280 1500 Amperes at 48V D.C.
 SU280B 1500 Amperes at 80V D.C.

Typical Voltage Drop Across

New Contacts: 40mV per 100 Ampere

Maximum Recommended Contact Voltages:

SU280: 48V D.C.
 SU280B: 96V D.C.

Mechanical Life: >3,000,000

Coil Power Dissipation:

Continuously Rated Types (100% Duty Cycle):
 10 - 15 Watts

Prolonged Rated Types (90% Duty Cycle):
 >15 - <30 Watts

Intermittently Rated Types (70% Duty Cycle):
 30 - 40 Watts

Maximum Pull-in Voltage (Coil at 20°C):

Intermittently Rated Types: 60%V
 Continuously Rated Types: 66%V

Typical Drop-out Voltage: 10-25%V

Typical Pull-in time (n/o contacts to close): 30ms

Typical Drop-out time (n/o contacts to Open):

Without Suppression: 8ms
 With Diode Suppression: 60ms
 With Diode and Resistor
 (depending on value): 25ms

Typical Contact Bounce Period: 3ms

Auxiliary Contact Thermal Current Rating:

5 Ampere

Auxiliary Contact Switching Capacities (Resistive Load):

5 Ampere at 24V D.C.
 2 Ampere at 48V D.C.
 0.5 Ampere at 240V D.C.

Weight (Approximate):

SU280 (Spade Connector Version): 755g
 SU280 (Plug Connector Version): 745g
 Add 20g for Auxiliary Contacts & 50g for Magnetic Blowouts.

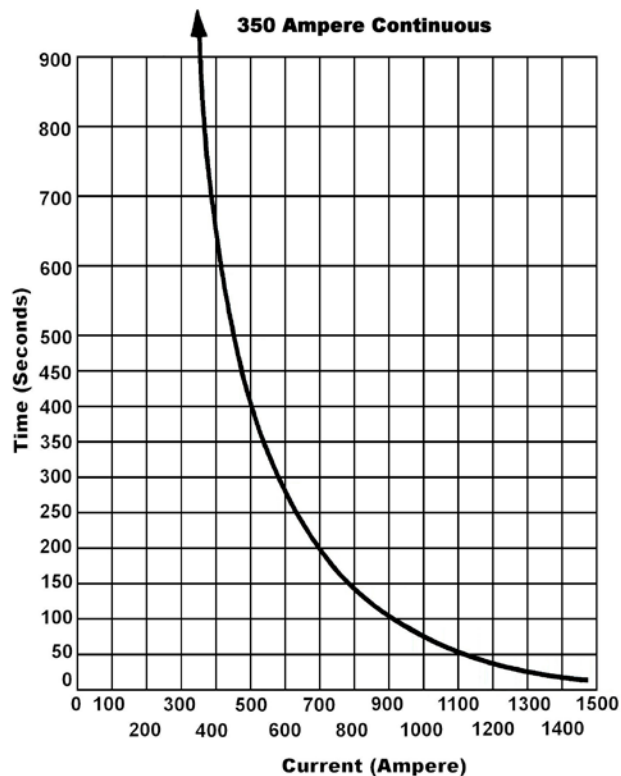
Minimum Copper Busbar Sizes for the Maximum Continuous Current Ratings:

350 Ampere
 228mm²

This is a guide only; customer may have to de-rate according to conduction cross sectional area, insulation and connecting method. Please consult Albright if further guidance required.

Please Note: All Performance data provided should be used as a guide only. Some de-rating or variation from these figures may be necessary according to type and application.

CONTACT PERFORMANCE



Albright is registered under BS EN ISO 14001—Environmental Management System. Should you require information on the disposal of our products, please contact the Health, Safety & Environmental Manager of your Local Supplier for Disposal Guidance Note

