

## DCX Adapter Board Installation Instructions

The wire harness and connectors for various golf cars require an adapter when used with the Alltrax DCX Controllers. Controllers are shipped with the adapter board loose and must be installed by the end user. Models include are Club Car PD+, IQ and Precedent cars and Yamaha G-19 & some G22.



### Tools:

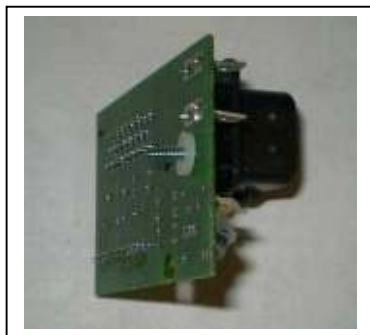
- #2 Philips Screwdriver

### Unpacking

Unpack the controller. Inside the box is a package containing the adapter board, a screw and a washer. Remove from the package.

### Installation

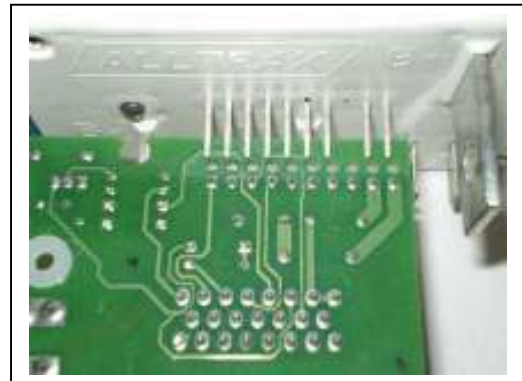
- Remove upper left most screw on the front of the controller (if installed)
- Take the screw from the package and place through the hole in the adapter board (See picture for reference)



### Installation (cont.)

- Place the supplied washer on the backside of the board over the screw.
- Line up the 10 holes on the backside of the adapter board with the 10 pins on the front of the controller.

**(Note: There is dielectric grease on the pins of the controller, do not wipe off)**



- Push the board firmly onto the pins until it is fully seated.
- Tighten the screw down so the board is does not come loose. (Hand tight is OK)



The controller is now ready to be installed into the vehicle.

If there are any questions, please contact tech support at: 541-476-3565 or via email: [helpdesk@alltraxinc.com](mailto:helpdesk@alltraxinc.com)